

Engineering Graphics

- Presentation graphics
- Levels of hardware visualization
 - Sketching
 - Drawing
 - Drafting
 - Solid modeling
- Visual presentation of data



Presentation Graphics

- Always use landscape, not portrait layout
 - Better fit to screens and projectors
 - Follows natural eye motions
 - Not much choice with computer projections, anyway
- When printed as 8.5"x11", all features should be readable when laid on the ground at your feet
- *All* the data goes on the viewgraph - presentations live on after the talk!
- Maximize information density while maintaining legibility, audience comprehension





Choosing a Background Format

- ✦ Unifying graphical element throughout the presentation
- ✦ Especially important for a multi-person team presentation
- ✦ Some critical issues to think about:
 - ✦ Do the graphics add or detract from the focus of the presentation?
 - ✦ How do they look printed out in B&W?
 - ✦ How will be look when projected in each possible format (computer, viewgraphs, etc.)?

Slide Layout

Unobtrusive graphical element(s)
for visual interest

- Easy-to-read text
- Adaptable to multiple elements (text, figures, pictures, etc.)

Who's responsible for this product?

What is this presentation?

What does this fit into?



UNIVERSITY OF
MARYLAND

Engineering Graphics
Launch and Entry Vehicle Design

Another Example of Slide Layout



Subtle reminder of what the project is all about

What is the project or program?

Unobtrusive graphical element
for visual interest

Graphical icon for organization

Who's responsible for this product?

Space Systems Laboratory – University of Maryland

Presentation Pitfalls

- Don't OVERDO The Use Of Capital Letters -And At least Be consistent!
- Proofread! Chek teh grammer and speling!
- Jest besides you're spell-checker don't flag some ding didn't mean thee slid is all write!
- Resist the **urge** to **play games** with **lots** of multiple **fonts** and **colors** and **sounds** and **sizeS**
- Don't read the viewgraphs to the audience
- Don't face the screen when you talk
- ➔ **The audience's attention should be focused on what you're saying, not how you're presenting it!**



Low Information Density

- Some say just six lines
- Only six words on each line
- They're totally wrong!



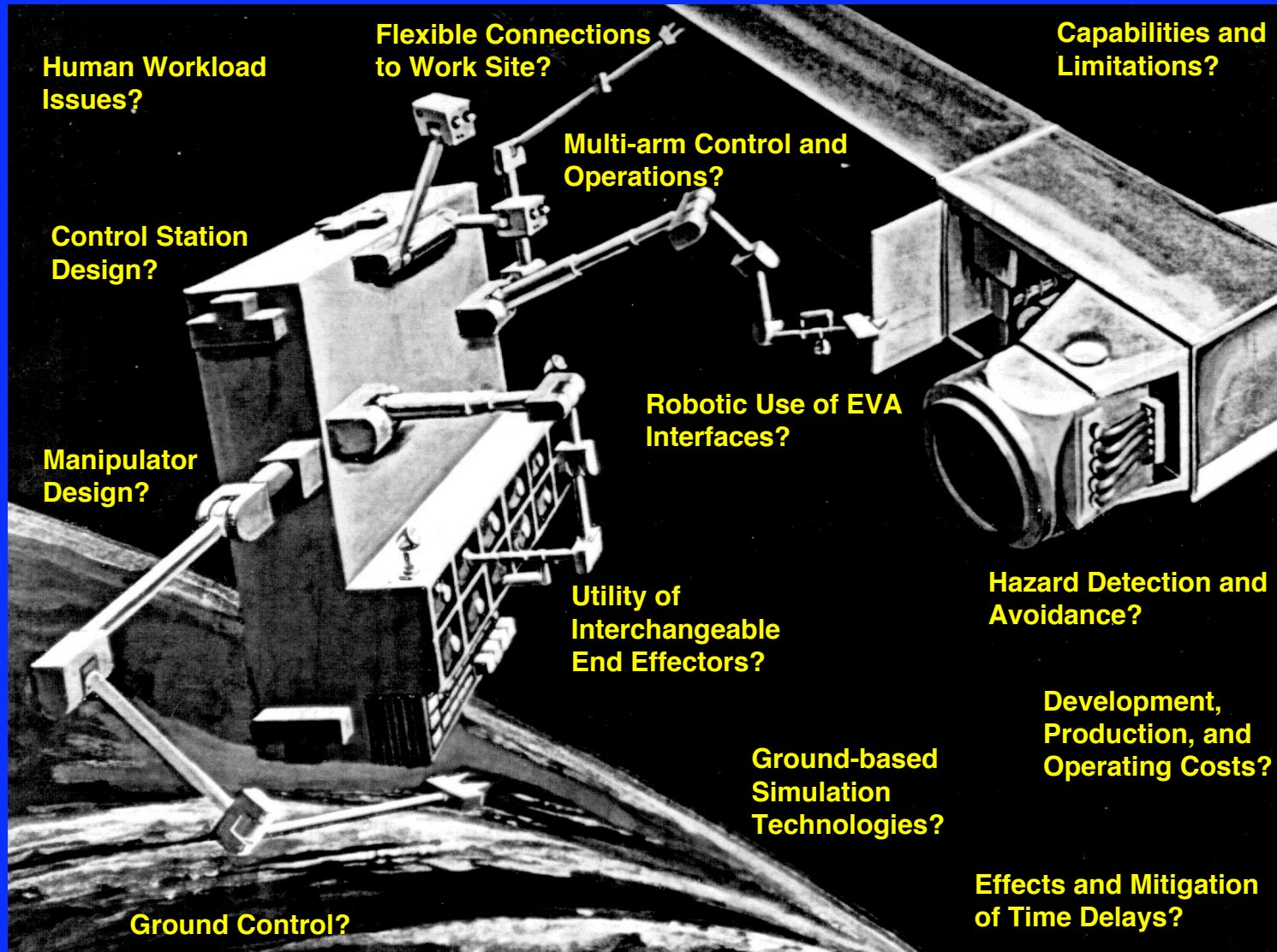
What are the Unknowns in Space Robotics?

(An example of ineffective information transfer)

- Can we count on dexterous robotics to work when planning future missions? What are their capabilities and limitations? Can we build a useful robot for a reasonable amount of money?
- Can we teleoperate in orbit from the ground? What are the performance hits due to time delays? Can advanced control station technologies ameliorate these hits?
- Can a robot be designed to use interfaces other than ones specifically designed for robots? Can robots adapt to EVA interfaces, reducing (or eliminating!) the design overhead for robotic servicing?
- How does increasing the capabilities of a robot through greater numbers of manipulators affect system performance? How can we increase degrees of freedom without proportional increases in operator workload?
- Are interchangeable end effectors a viable approach to increasing dexterity without increasing degrees of freedom? Can we perform EVA tasks without EVA dexterity?
- How does robotic performance change in the presence of realistic (i.e., not perfectly rigid) attachment to the work site? Can robot repositioning capability add to system performance?



What are the Unknowns in Space Robotics?



UNIVERSITY OF
MARYLAND

Engineering Graphics
Launch and Entry Vehicle Design

Sketching to Effectively Communicate

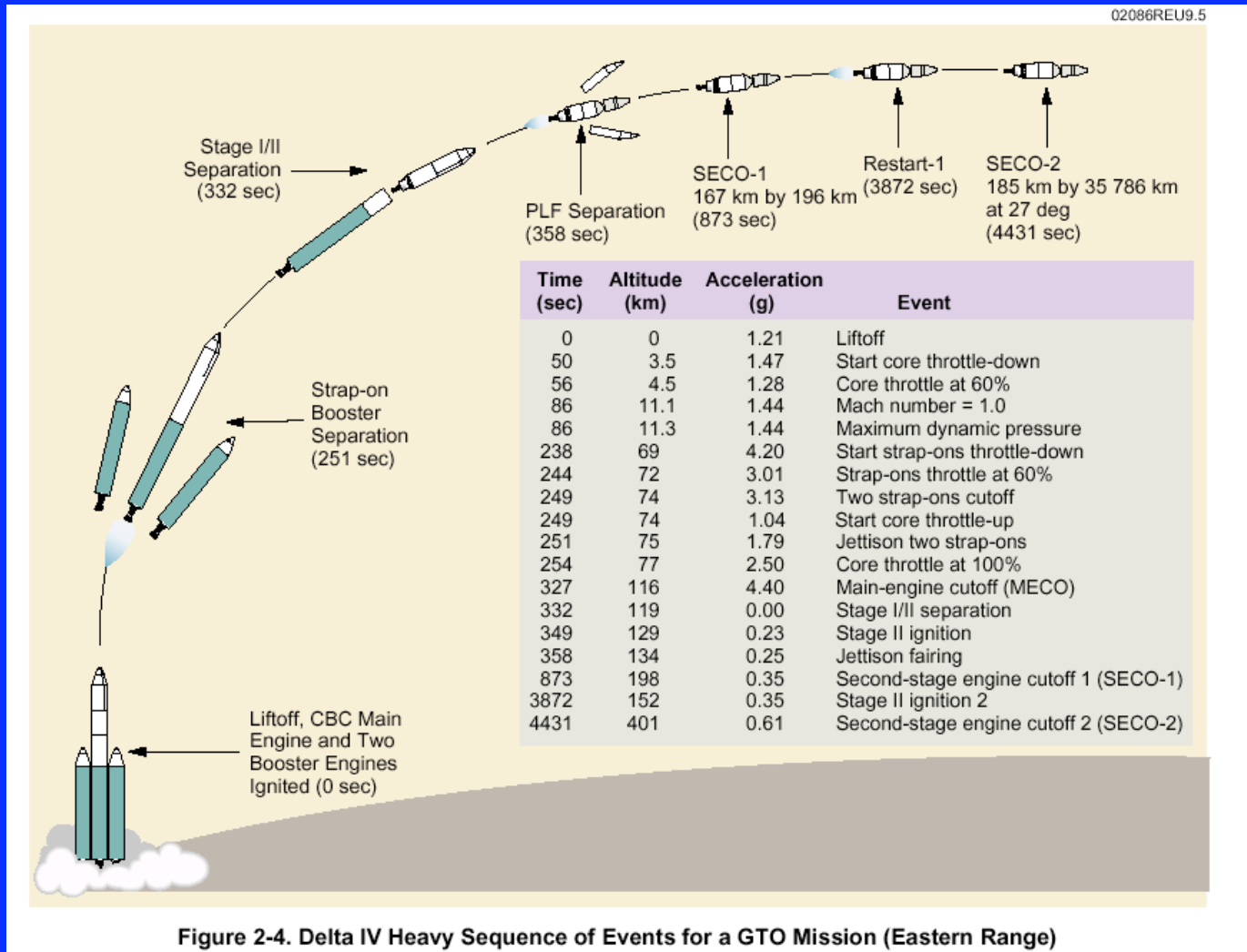


Figure 2-4. Delta IV Heavy Sequence of Events for a GTO Mission (Eastern Range)

From Boeing Corporation, *Delta IV Payload Planners Guide*, 1999



UNIVERSITY OF
MARYLAND

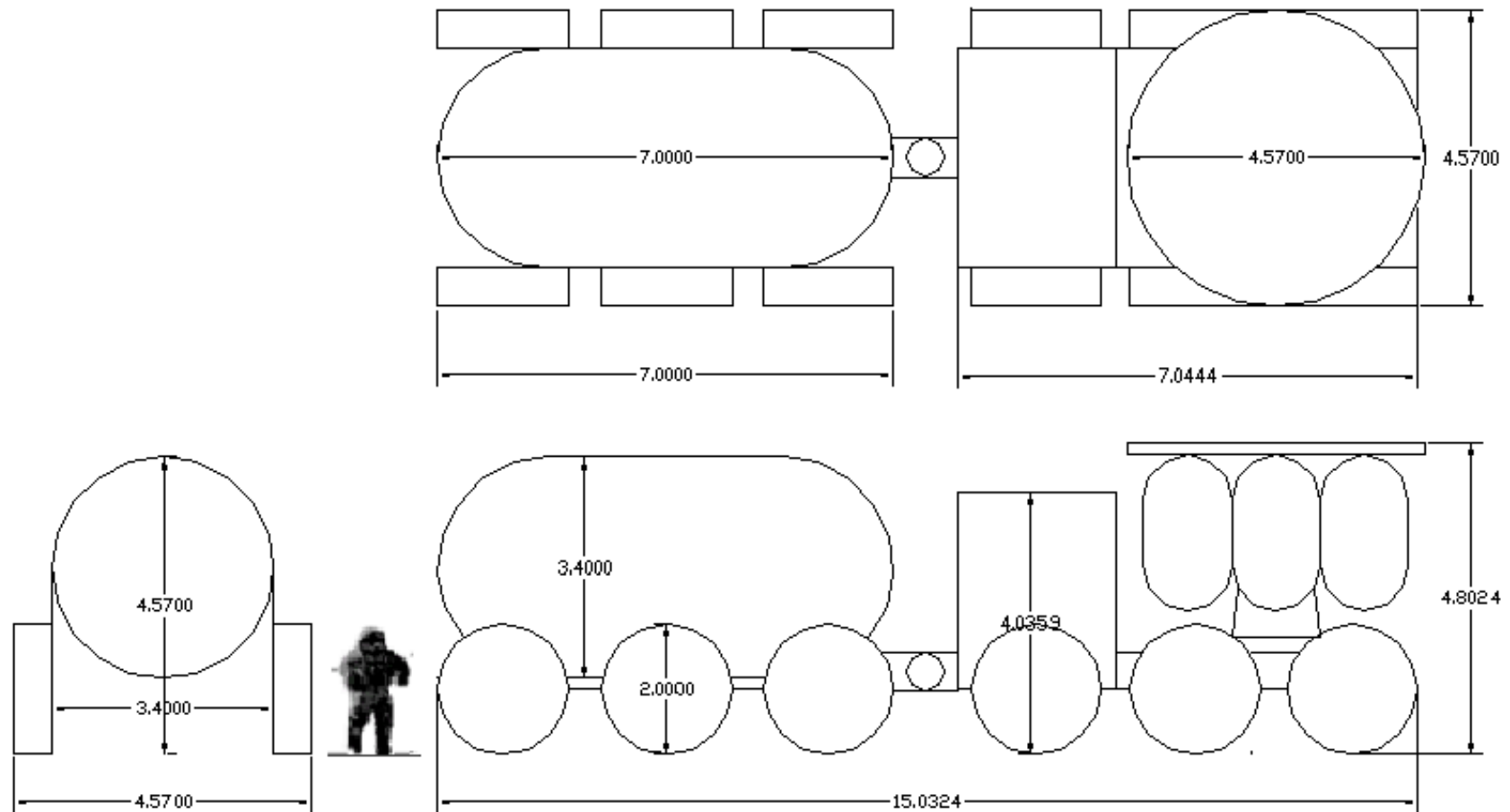
Engineering Graphics
Launch and Entry Vehicle Design

Drawing

- Formal adherence to dimensions, spatial relationships
- Typically done on specialized drawing or 2D drafting packages (or manually)
- More time-consuming than sketching; arguably faster than solids modeling
- Line drawing typically well suited to publication



Technical Drawing (Three-View) Example



All dimensions in meters



UNIVERSITY OF
MARYLAND

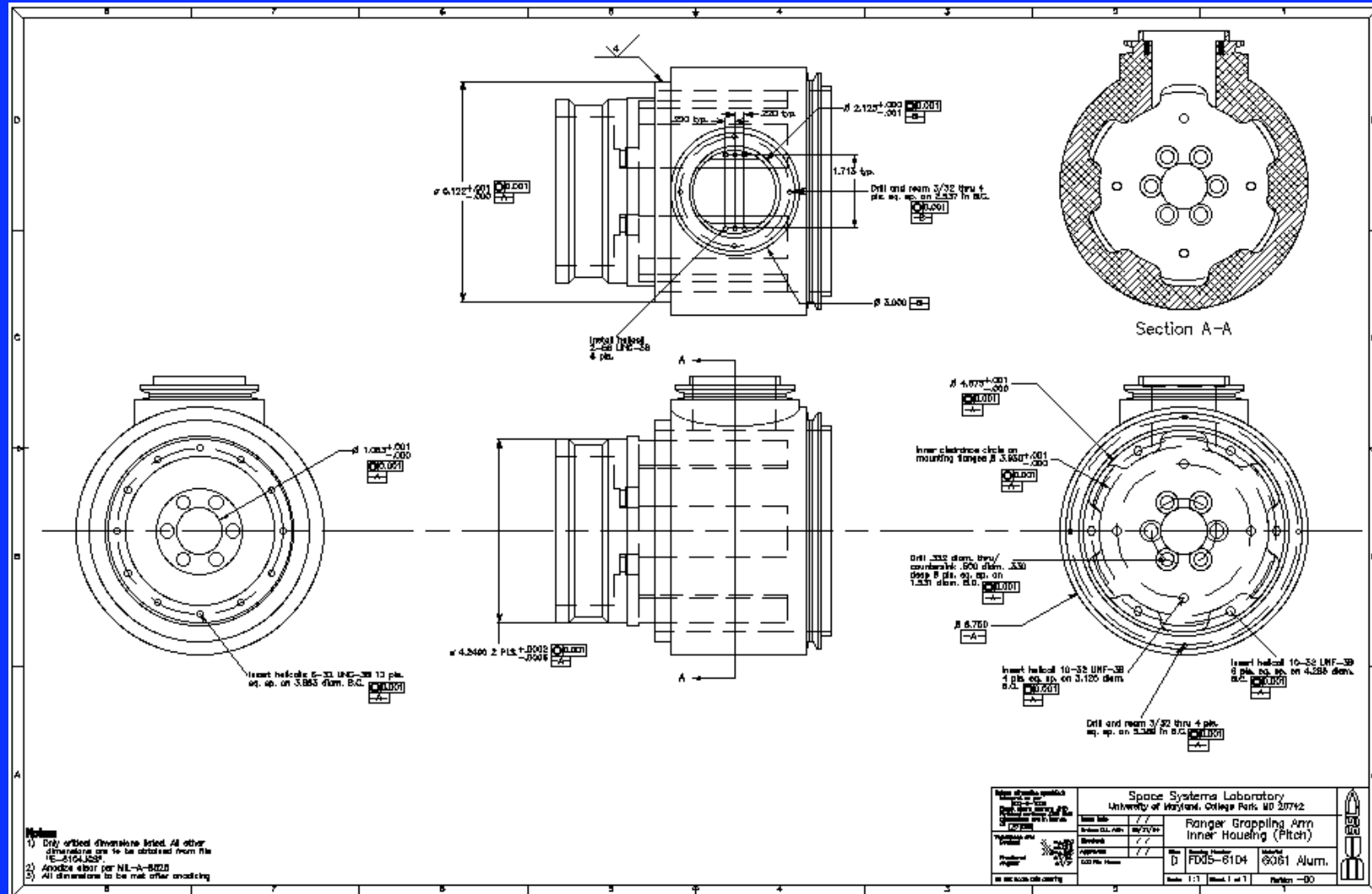
Engineering Graphics
Launch and Entry Vehicle Design

Drafting

- Highly formalized representation of all details of component
- 2D representation of 3D objects through multiple views
- Required mastery of sophisticated software package(s)
- Not generally appropriate for preliminary design activities



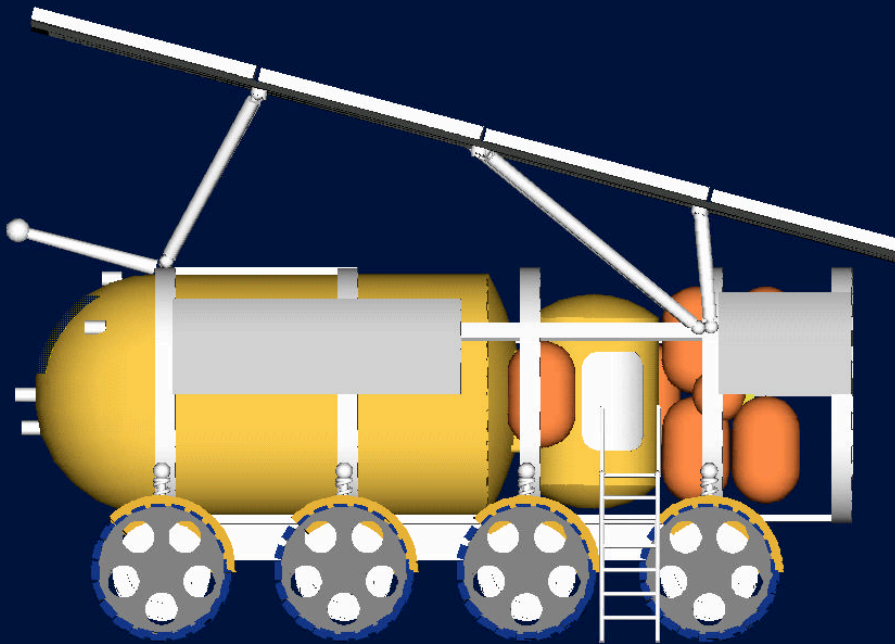
Drafting Example



UNIVERSITY OF
MARYLAND

Engineering Graphics
Launch and Entry Vehicle Design

Solid Models



- Allows 3D design, provides most realistic rendering, allows virtual manipulation for comprehension
- Takes the place of several older skills:
 - Technical illustrator
 - Graphic artist
 - Model-maker



Numerical Precision and Units

- Precision: every digit you use says that you know the parameter to that level of accuracy
 - "1 mile" - accurate to $\sim 1/2$ mile (~ 800 m)
 - "1.609344 km" - accurate to .0005 m
- Precision is only associated with trailing zeros after the decimal point
 - 13,400; 134; 1.34; .000134 all to 3 places
 - 1.34000 is 6 places of precision
- Only nondimensional parameters should ever appear without units attached



Visual Presentation of Information

The classics in this field are by Edward R. Tufte of Yale University

- *The Visual Display of Quantitative Information*
- *Envisioning Information*
- *Visual Explanations*
- *Visual and Statistical Thinking: Displays of Evidence for Making Decisions*

All from Graphics Press

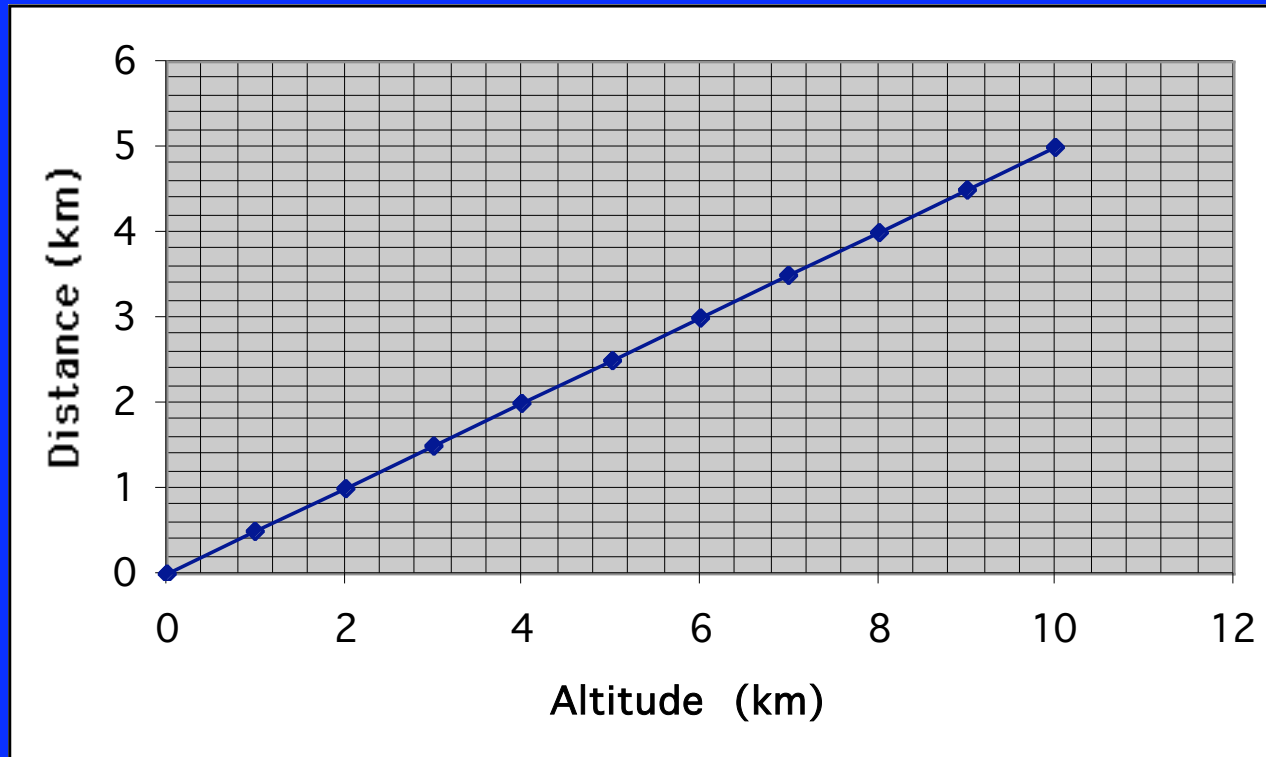


Basic Concepts

- The primary responsibility is to the data
 - Don't falsify it
 - Don't withhold it
 - Don't obscure it
 - Don't decorate it
- Maximize the data-ink ratio
- Eliminate chartjunk
- Maintain graphical integrity



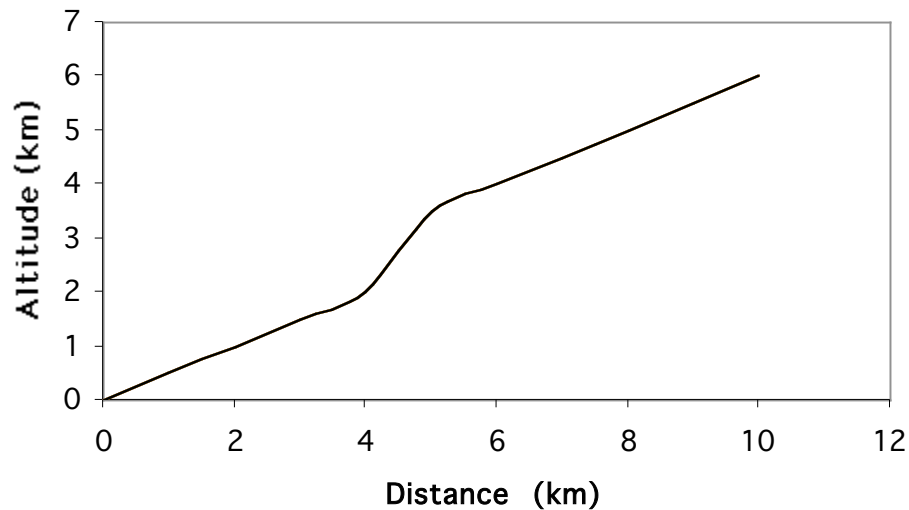
Misrepresentation of Data



- Chart only represents one piece of data (30°)
- Extra chartjunk (lines, shading, symbols) obscure information content

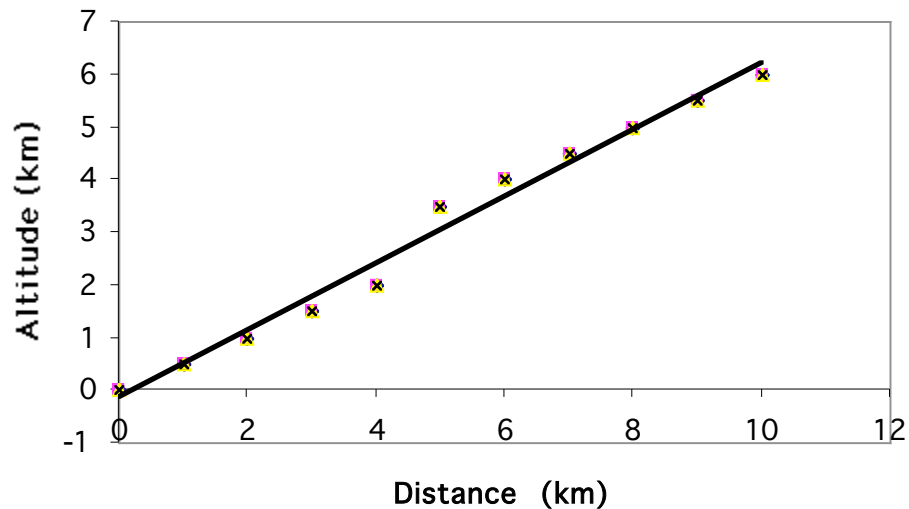


Misuse of Plotting Features

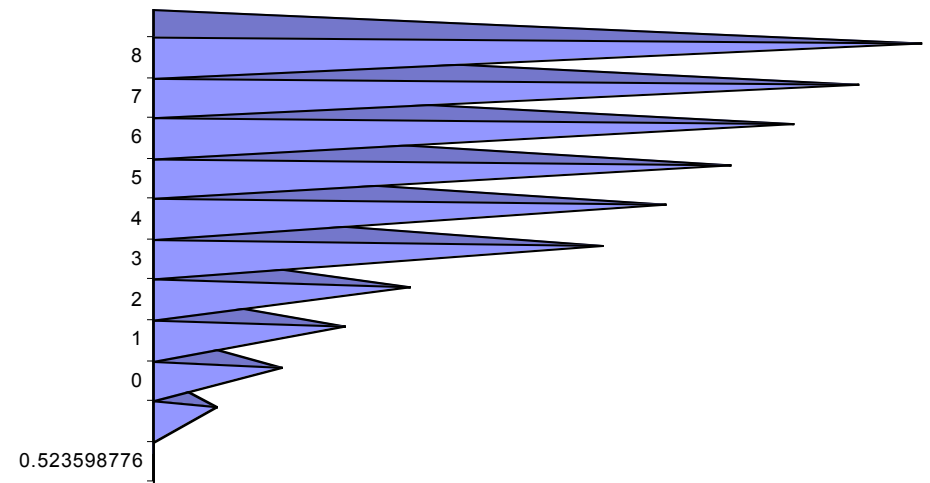
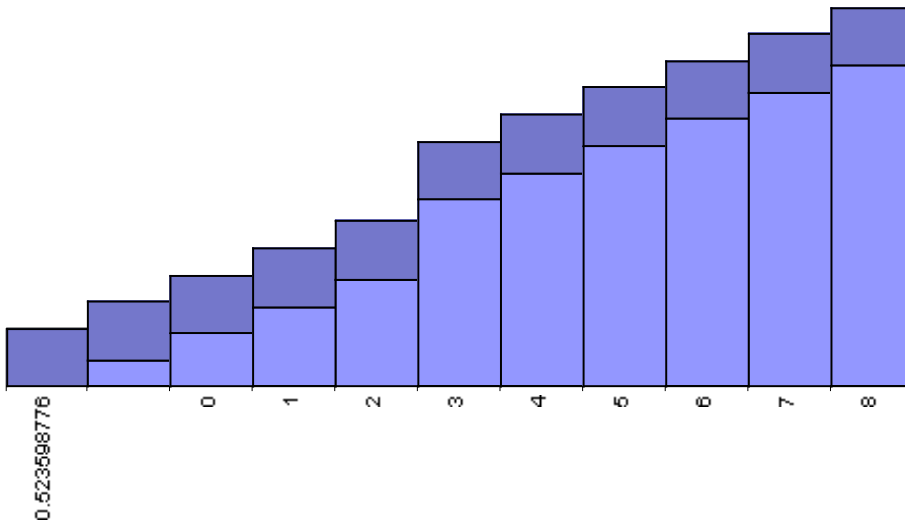
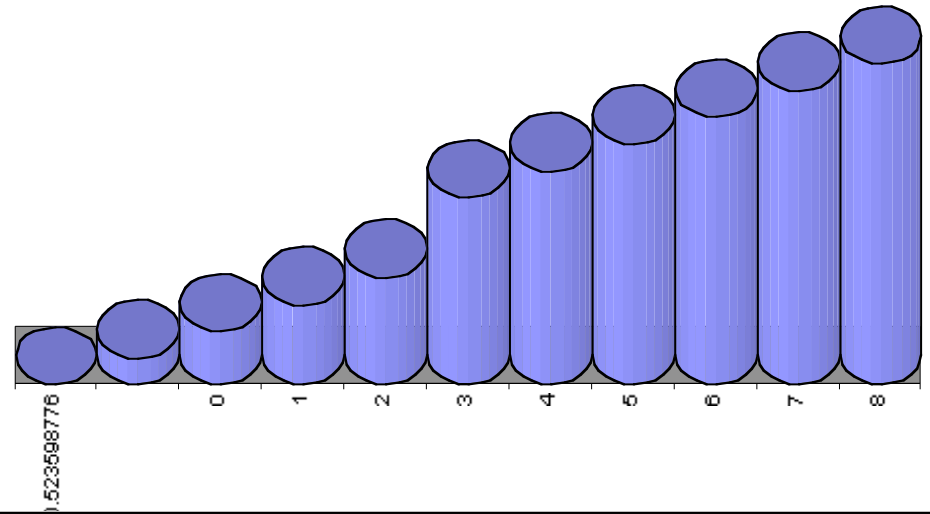
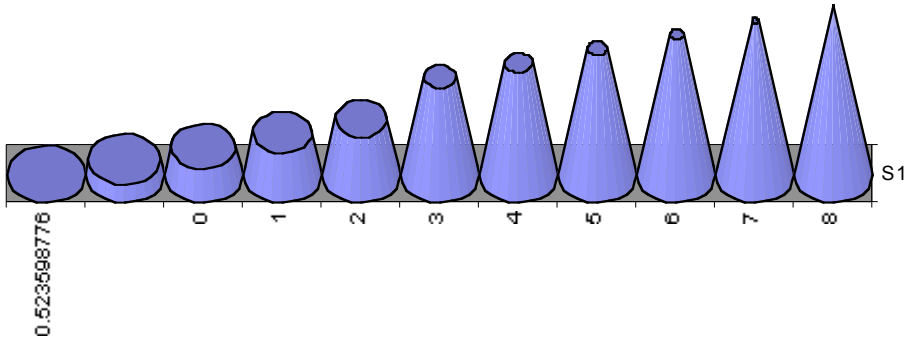


Smoothing function without data markers implies continuity that doesn't exist

Show actual data with markers - use line only for analytical curve fit



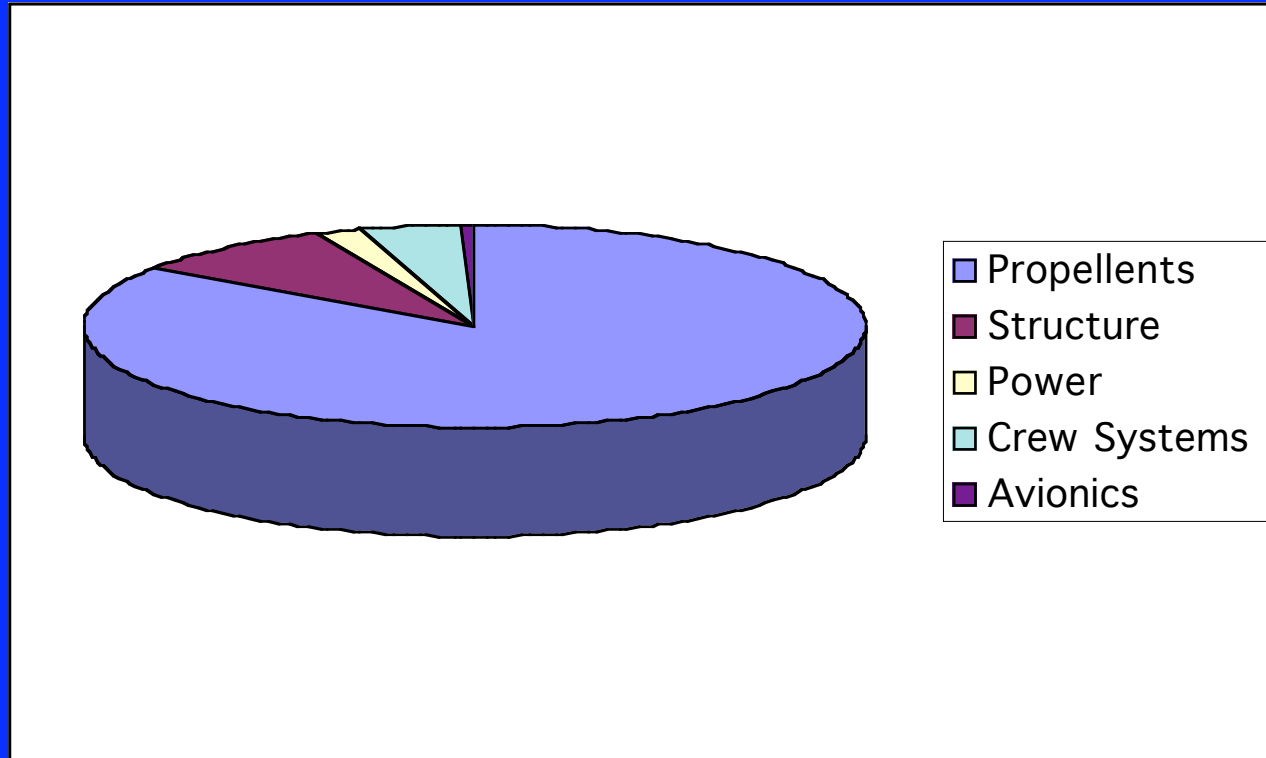
More Bad Plotting Ideas



UNIVERSITY OF
MARYLAND

Engineering Graphics
Launch and Entry Vehicle Design

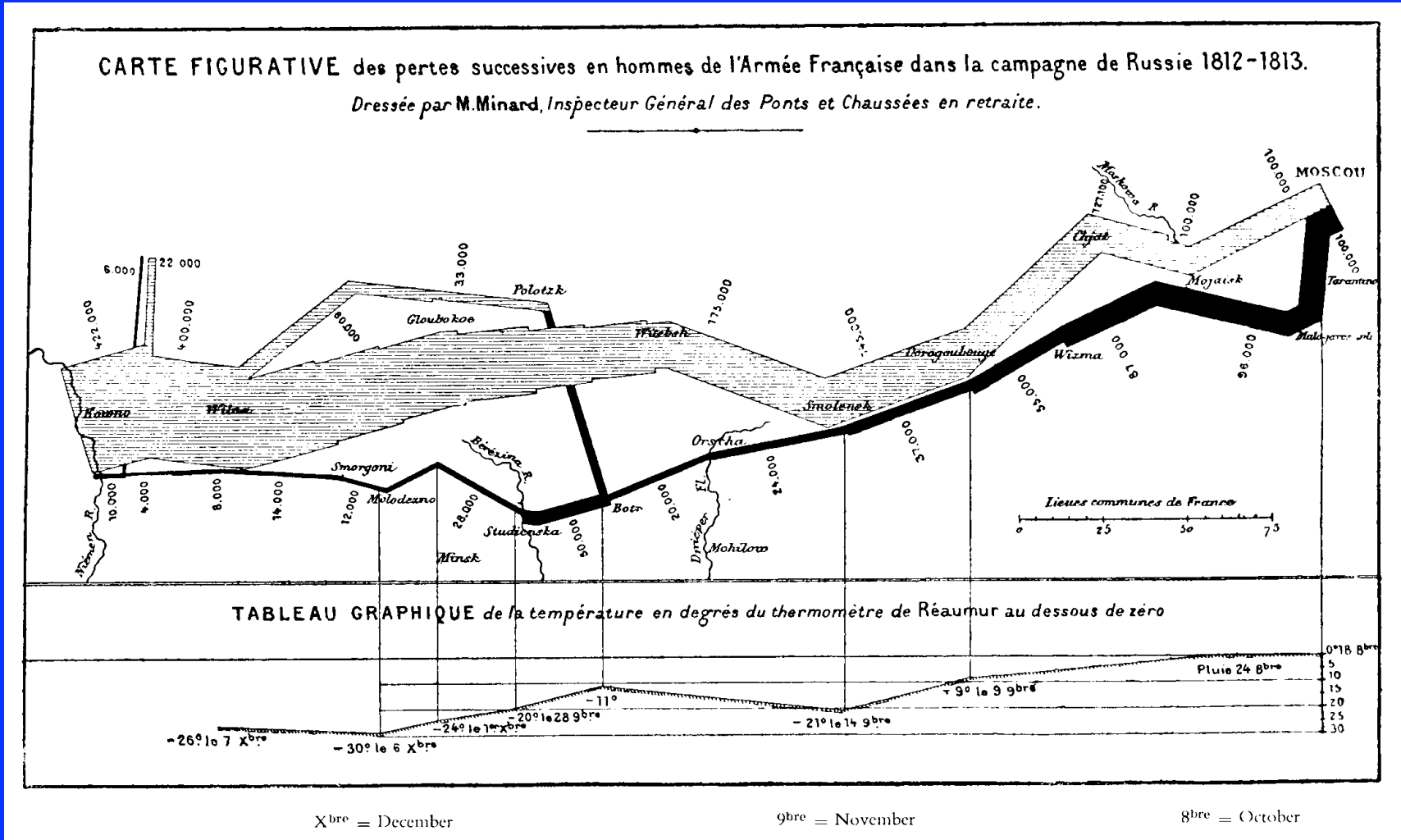
Why Pie Charts Suck



- Absolute data is eliminated in favor of relative comparisons
- Extremely low data-ink ratio



The "Best Graphic Ever Made"



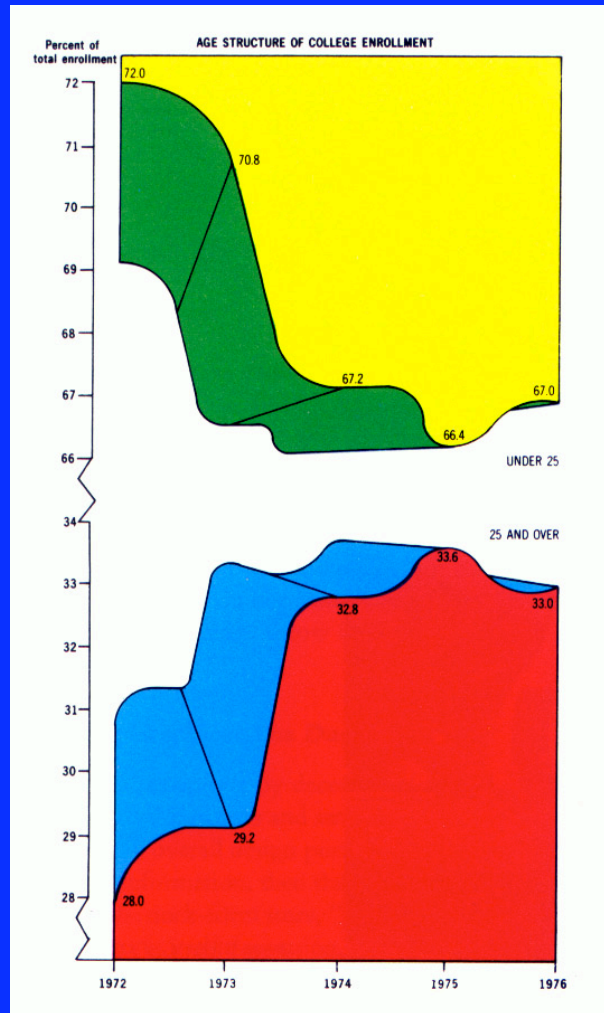
From Edward R. Tufte, *The Visual Display of Quantitative Information* Graphics Press, 1983



UNIVERSITY OF
MARYLAND

Engineering Graphics
Launch and Entry Vehicle Design

The "Worst Graphic Ever Made"



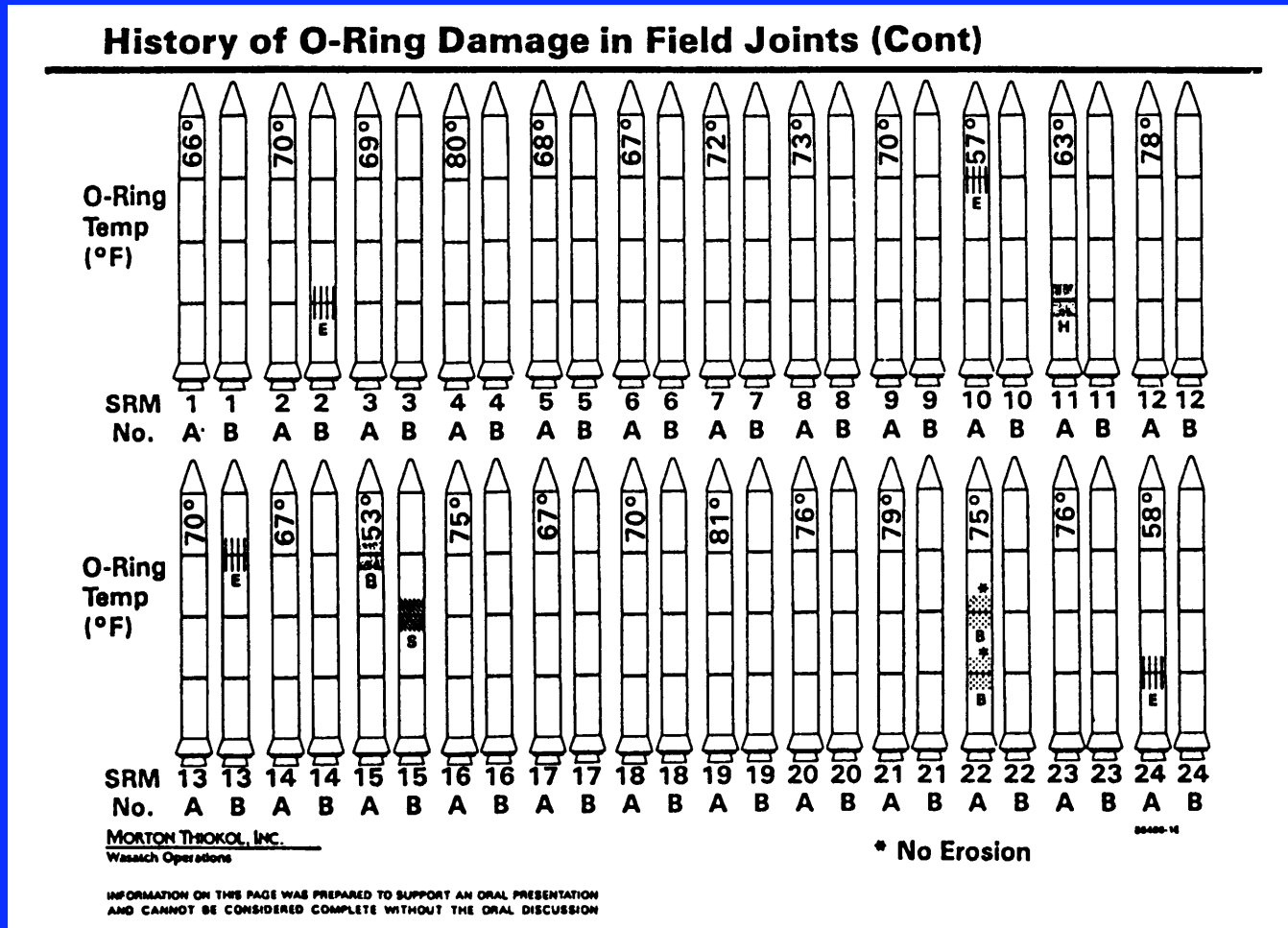
From Edward R. Tufte, *The Visual Display of Quantitative Information* Graphics Press, 1983



UNIVERSITY OF
MARYLAND

Engineering Graphics
Launch and Entry Vehicle Design

The Slide That Was Presented



From Edward R. Tufte, *Visual and Statistical Thinking: Displays of Evidence for Making Decisions*
Graphics Press, 1997



UNIVERSITY OF
MARYLAND

Engineering Graphics
Launch and Entry Vehicle Design

The Slide That Should Have Been...

From Edward R. Tufte, *Visual and Statistical Thinking: Displays of Evidence for Making Decisions*
Graphics Press, 1997



UNIVERSITY OF
MARYLAND

Engineering Graphics
Launch and Entry Vehicle Design

Is PowerPoint the Spawn of the Devil?

- Increasing tendency to use PowerPoint presentations as archival documentation
- Unless authors are (unusually) vigilant, much of the modeling and analysis is omitted from review presentation
- In the absence of traditional narrative reporting, critical intellectual content is lost after authors leave
- Conclusions without underlying knowledge frequently create false understandings



Gettysburg Cemetery Dedication

Abraham Lincoln

11/19/1863

[home](#)

[back](#)

[next](#)

Agenda

- Met on battlefield (great)
- Dedicate portion of field - fitting!
- Unfinished work (great tasks)

11/19/1863

[home](#)

[back](#)

[next](#)

Not on Agenda!

- Dedicate
- Consecrate
- Hallow
(in narrow sense)
- Add or detract
- Note or remember what we say

11/19/1863

[home](#)

[back](#)

[next](#)

Review of Key Objectives & Critical Success Factors

- What makes nation unique
 - Conceived in Liberty
 - Men are equal
- Shared vision
 - New birth of freedom
 - Gov't of/for/by the people

11/19/1863

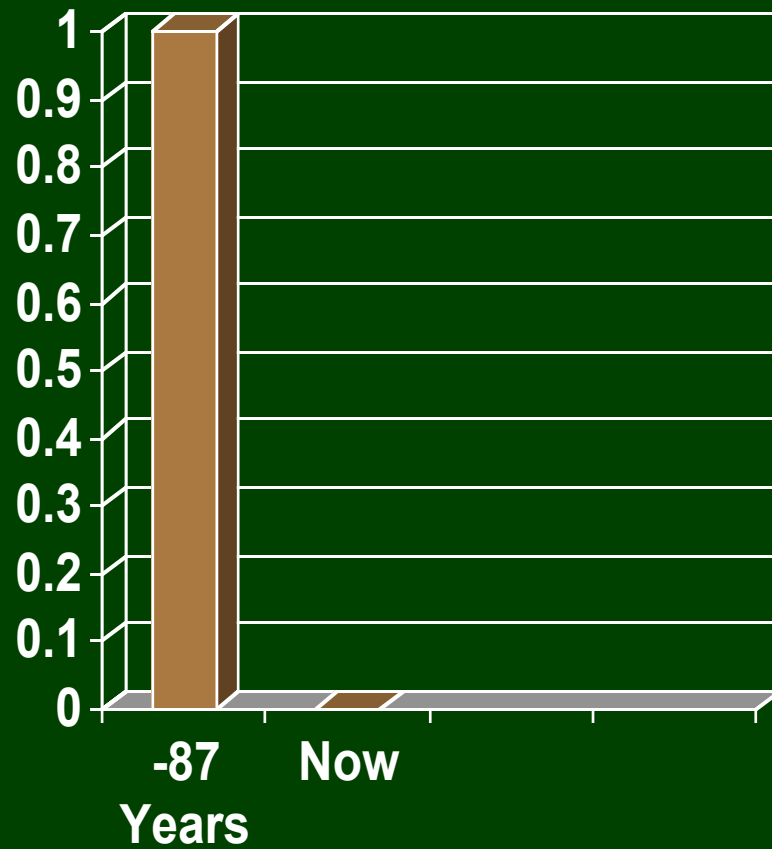
[home](#)

[back](#)

[next](#)

Organizational Overview

11/19/1863



■ New Nations

[home](#)

[back](#)

[next](#)

Summary

- New nation
- Civil war
- Dedicate field
- Dedicated to unfinished work
- New birth of freedom
- Government not perish

11/19/1863

[home](#)

[back](#)

[next](#)

Akin's Laws of Spacecraft Design - #20

A bad design with a good presentation is doomed eventually. A good design with a bad presentation is doomed immediately.

